



HEADQUARTERS FIGHTER WEAPONS SCHOOL
NELLIS AIR FORCE BASE
LAS VEGAS, NEVADA

Classification.....UNCLASS
Author: FWS/CC
Date...17 Jul 1967.....

MISSION 01 ORDERS

1. OVERVIEW.

1.1. Mission overview:

Today's is your first sortie as a Fighter Weapons School's student. Since you already know the ranges, this first mission will not only serve as a refresher, but it will also test your navigation skills.

After departure, you'll follow the Instructor Pilot (IP) to NAVIGATION POINT NIXON. Once there the test will start. You'll need to show proficiency in:

- planning;
- fuel management;
- visual and instrument navigation.

1.2. Objectives:

1.2.1. Starting from NIXON, reach the three Waypoints (TEXAS LAKE, COYOTE and CEDAR PEAK) and return to NIXON in less than 26 minutes.

1.2.2. Flying over any restricted area will result in mission failure.

1.2.3. BINGO fuel before mission accomplishment will result in mission failure.

1.2.4. Flying above 18,000 feet MSL during the test will result in mission failure.

1.2.5. Flying below 12,000 feet MSL during the test will result in mission failure.

1.3. Mission Commander:

Capt. John R. Boyd.

2. AREA OF OPERATIONS.

2.1. Working areas:

All NTTR.

2.2. Restricted areas:

R-4808A, R-4809A.

2.3. Environmental conditions:

Standard.

3. STATUS OF ENEMY FORCES.

3.1. Ground forces and AAA:

NIL.

4. MISSION EMPLOYMENT BRIEFING.

4.1. Flight:

4.1.1. Pontiac 01 (2x F-86F)

- 4.1.1.1. Pontiac 1-1: Capt. John R. Boyd;
- 4.1.1.2. Pontiac 1-2: LT William H. Spencer;

4.2. Fuel:

- 4.2.1. Internal tanks: 2,826 lbs;
- 4.2.2. External tanks: NIL;
- 4.2.3. BINGO fuel: 1,000 lbs

4.3. Ground operations:

As standard.

4.4. Departure:

GASS PEAK departure.

4.5. Enroute:

- 4.5.1. Mission freq.: Channel 1 (main), Channel 11 (alternate);
- 4.5.2. Formation: Echelon.

4.6. Engagement tactics:

NIL

4.7. Egress plan (route, mutual support agreements):

NIL.

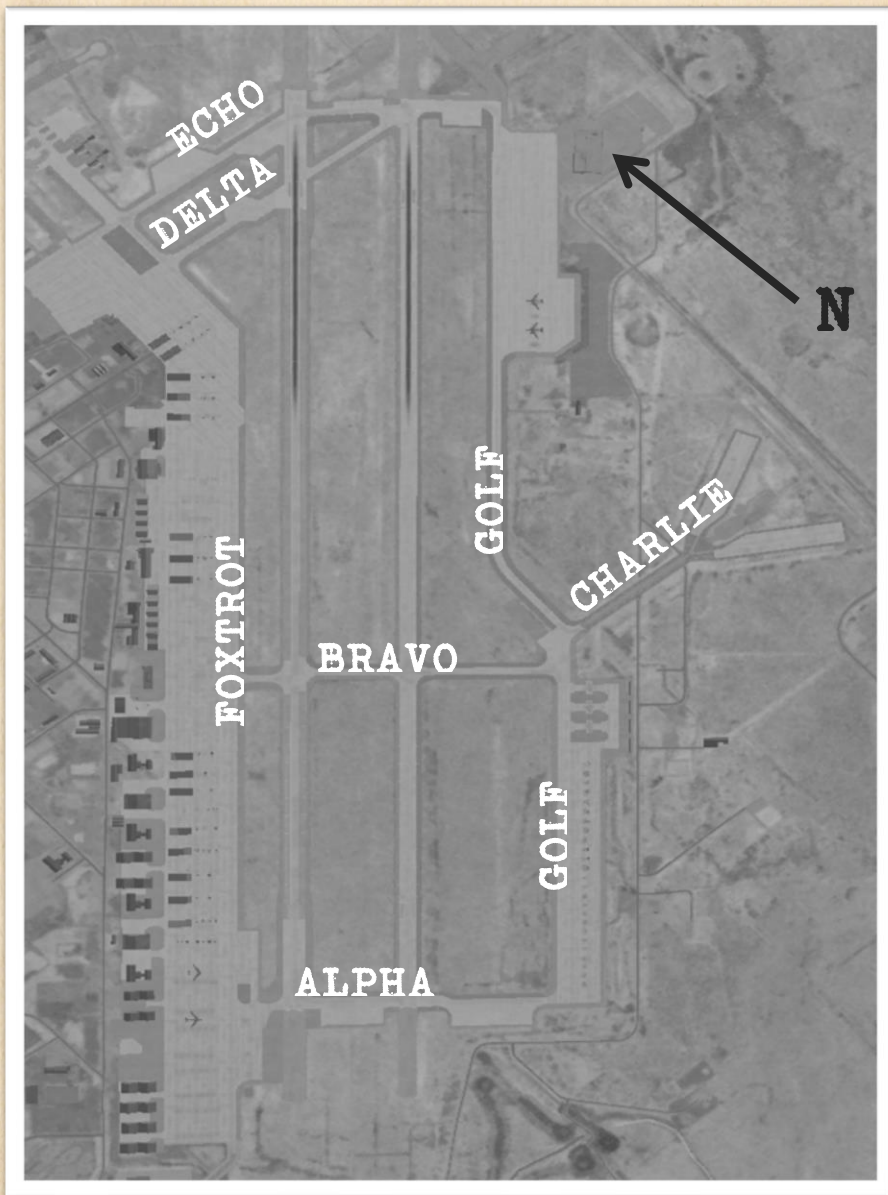
4.8. Recovery:

GASS PEAK recovery.

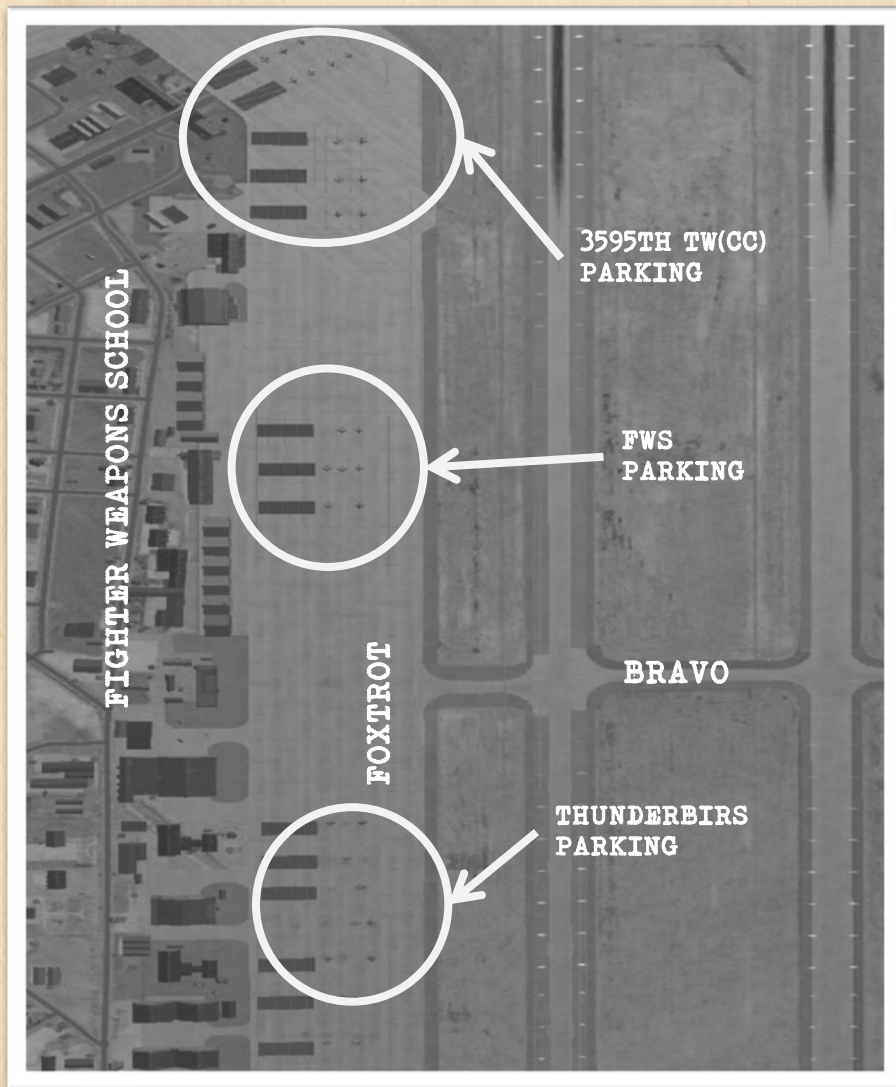
LIST OF ANNEXES

ANNEX "A"	NAVIGATION
ANNEX "B"	COMMUNICATIONS

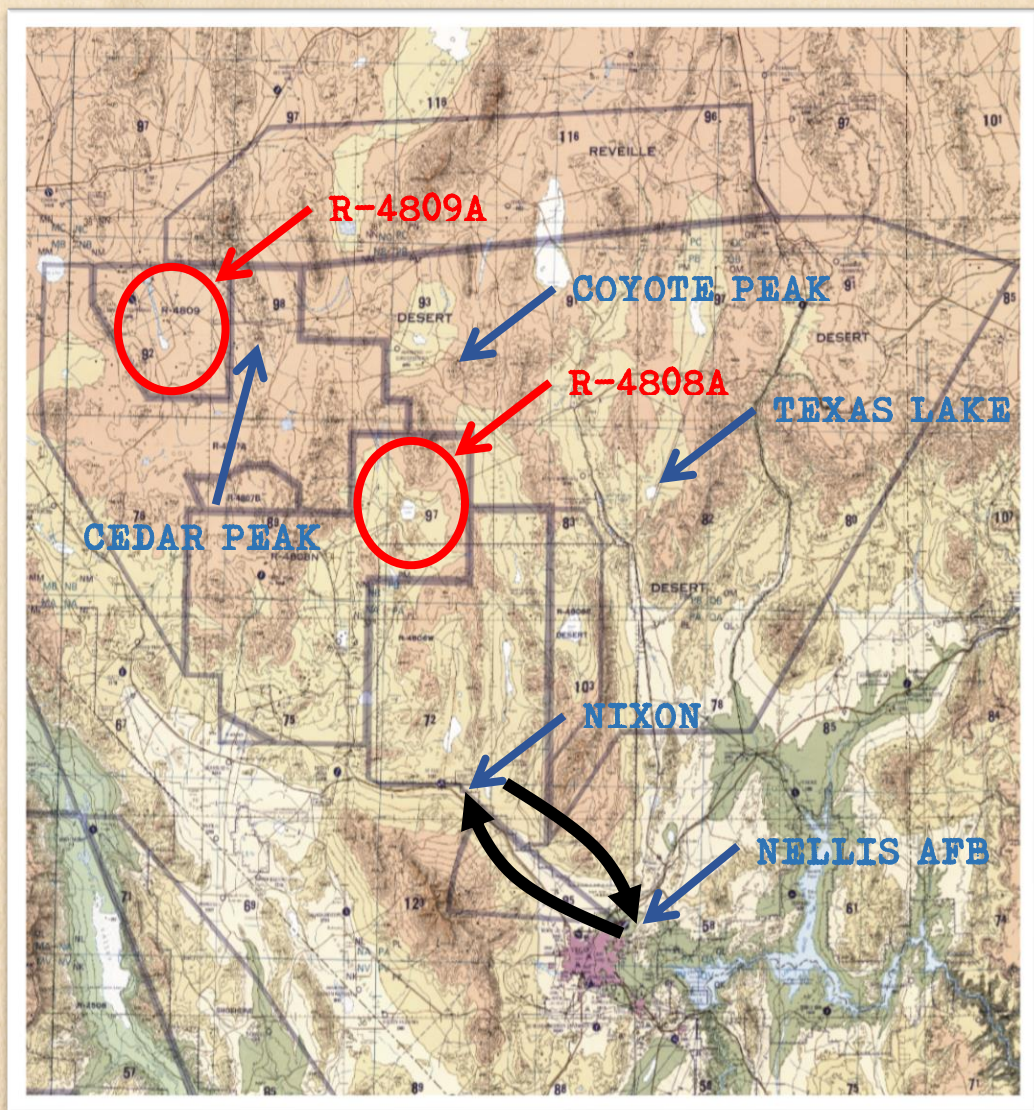
NELLIS AIR FORCE BASE



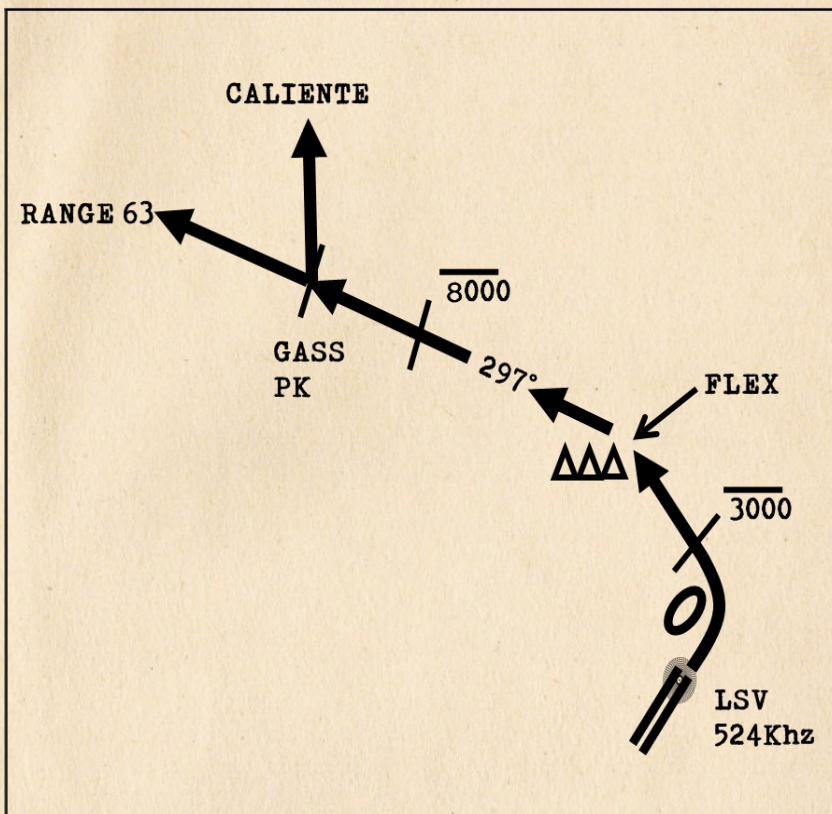
FIGHTER WEAPONS SCHOOL PARKING



FLIGHT PLAN



GASS PEAK DEPARTURE

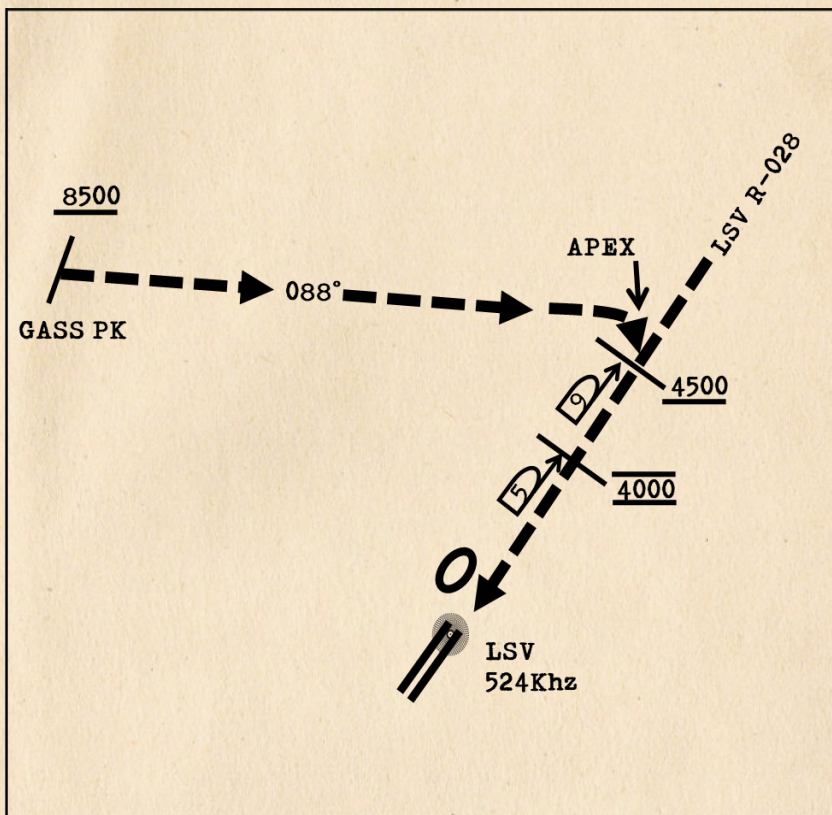


PILOT IS RESPONSIBLE FOR TERRAIN/OBSTACLE AVOIDANCE

TAKE-OFF RUNWAY 3L/R:

1. Remain below 3,000 feet MSL until north of Race Track and turned westbound.
2. Turn left within 4 NM of Nellis direct FLEX.
3. Fly north of FLEX and then turn 297° at or below 8,000 feet MSL.
4. Cross GASS PEAK and fly routing for appropriate mission transition.

GASS PEAK RECOVERY

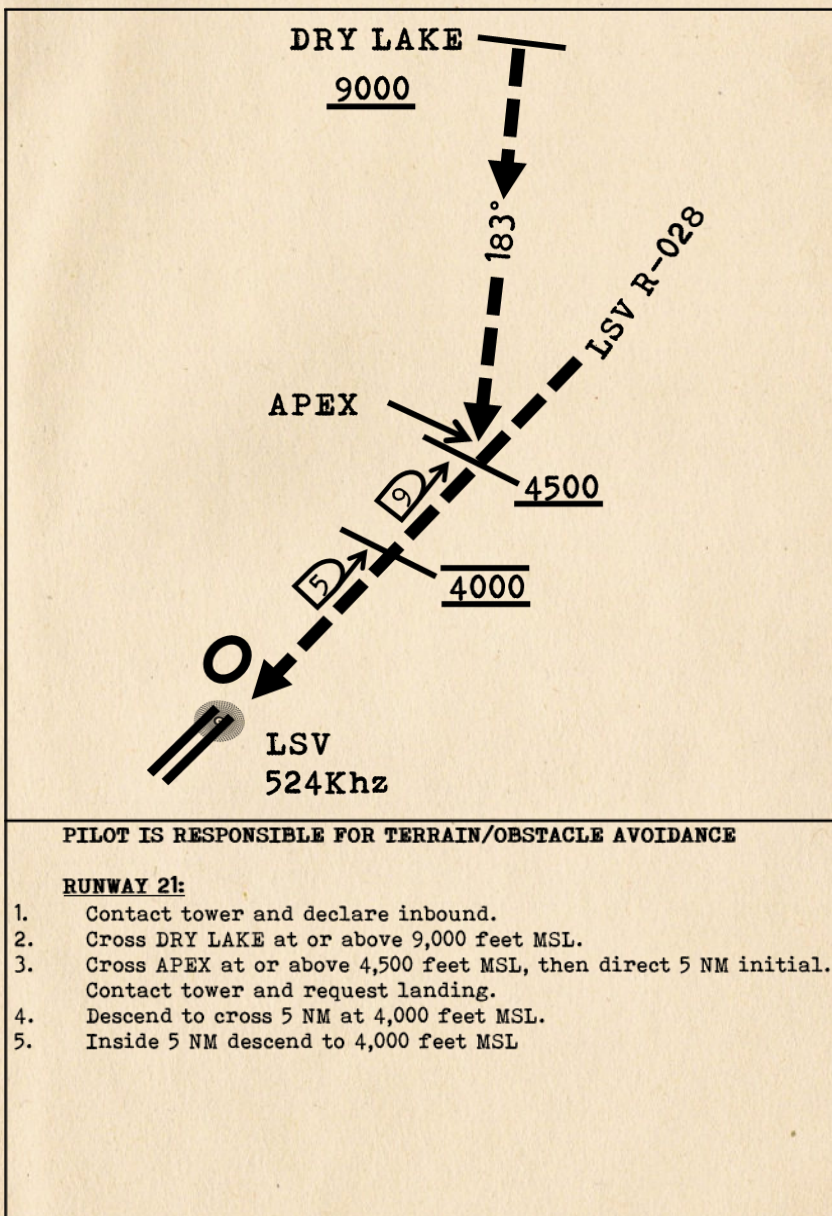


PILOT IS RESPONSIBLE FOR TERRAIN/OBSTACLE AVOIDANCE

RUNWAY 21:

1. Contact tower and declare inbound.
2. Cross GASS PEAK at or above 8,500 feet MSL.
3. Cross APEX at or above 4,500 feet MSL, then direct 5 NM initial. Contact tower and request landing.
4. Descend to cross 5 NM at 4,000 feet MSL.
5. Inside 5 NM descend to 4,000 feet MSL

DRY LAKE RECOVERY



CHANNELIZATION

RADIO			NAVIGATION		
CH	NAME	FREQ.	NDB	FREQ.	MORSE
G	GUARD	243.000 Mhz	///	///	///
1	SQUADRON MAIN	260.100 Mhz	///	///	///
2	Nellis AFB	327.000 Mhz	LSV	524 Khz	.-. / ... / ...-
3	Creech AFB	360.600 Mhz	INS	387 Khz	.. / -. / ...
4	Tonopah Test Range Airfield	257.950 Mhz	TQQ	478 Khz	- / --.- / --.-
5	Groom Lake	250.050 Mhz	GRL	618 Khz	--. / .-. / .-..
6	McCarran International Airport	257.800 Mhz	LAS	316 Khz	.-. / .- / ...
7	North Las Vegas	360.750 Mhz	///	///	///
8	SQUADRON AUX	328.500 Mhz	///	///	///
9	BARON	270.025 Mhz	///	///	///
10	BLACKJACK	377.800 Mhz	///	///	///
11	///	///	///	///	///
12	///	///	///	///	///
13	///	///	///	///	///
14	///	///	///	///	///
15	///	///	///	///	///
16	///	///	///	///	///
17	///	///	///	///	///
18	///	///	///	///	///

NAVAIDS

NAME	LOCATION	FREQ.	MORSE
MCY	Mercury	326 Khz	-- / -. / --.-
LSV	Nellis AFB	524 Khz	.-. / ... / ...-
BLD	Boulder	416 Khz	-... / .-. / --.
LAS	McCarran International	316 Khz	.-. / .- / ...
MMM	Mormon Mesa	446 Khz	-- / -- / --
BTY	Beatty	714 Khz	-... / - / --.-
GRL	Groom Lake AFB	618 Khz	--. / .-. / .-..
TQQ	Tonopah Test Range Airfield	478 Khz	- / --.- / --.-
ILC	Mount Wilson	365 Khz	.. / .-. / .-..
CYS	Crystal Springs	577 Khz	-. / --.- / ...
TBL	T-Bird Lake	642 Khz	- / -... / .-..
INS	Creech AFB	387 Khz	.. / -. / ...